

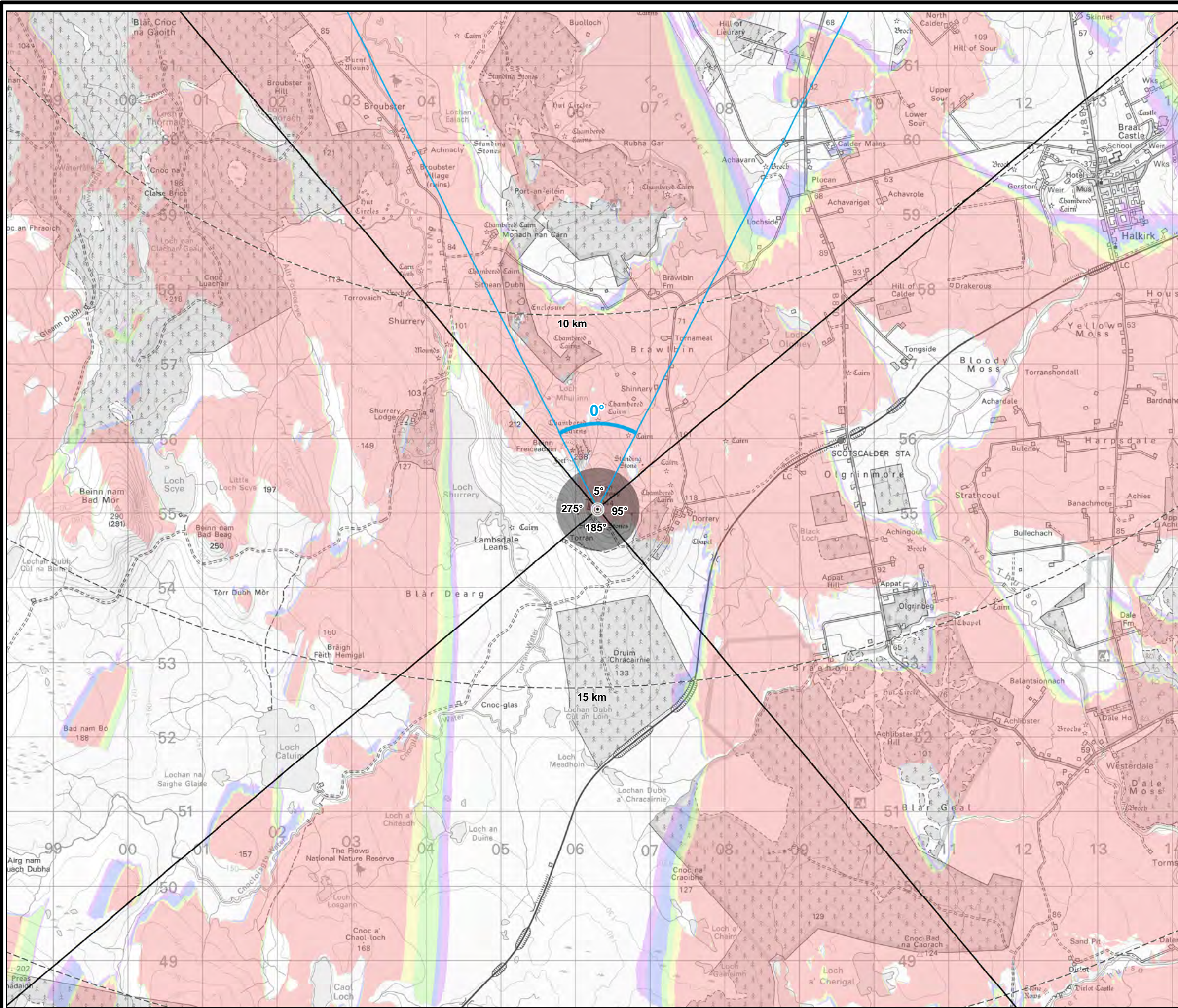


CAIRNMORE HILL WIND FARM

FIGURE 5.2.11

VIEWPOINT 11:
BEN DORRERY

© CROWN COPYRIGHT AND DATABASE RIGHTS
2022 ORDNANCE SURVEY 0100031673



- Turbine layout (PSCOhof060)
- 5km intervals from outer turbines
- 40km LVIA study area
- ⊙ Viewpoint
- 53.5° Field of View
- 90° Field of View

Theoretical wind farm visibility (138.5m)

- 1 turbine visible
- 2 turbines visible
- 3 turbines visible
- 4 turbines visible
- 5 turbines visible

Notes:
The ZTV is calculated to turbine tip height (138.5m) from a viewing height of 2m above ground level. The terrain model assumes bare ground. The data for a 45km buffer around the turbines is derived from OS Terrain 5 height data (obtained from EMapSite in July 2022). The data for extents beyond 45km is derived from OS Terrain 50 height data (obtained from Ordnance Survey in July 2019). Earth curvature and atmospheric refraction have been taken into account. The ZTV was calculated using ArcMap 10.8.1 software.



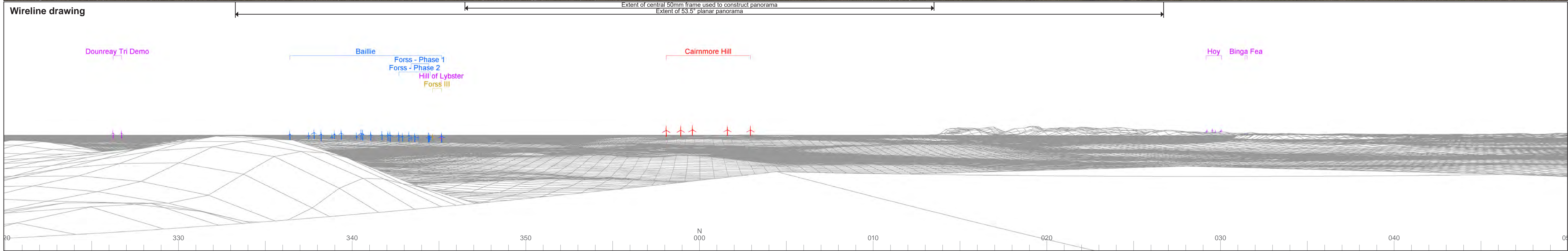
Data source: RES, LUC, SNH, NC500
LAYOUT DWG: PSCOhof060

DRAWING NUMBER: FIG5-2-X_11524_r0_VPOverview_A3L

SCALE - 1:50,000 @ A3

LANDSCAPE AND VISUAL IMPACT ASSESSMENT, 2022

THIS DRAWING IS THE PROPERTY OF RENEWABLE ENERGY SYSTEMS LTD. AND NO REPRODUCTION MAY BE MADE IN WHOLE OR IN PART WITHOUT PERMISSION

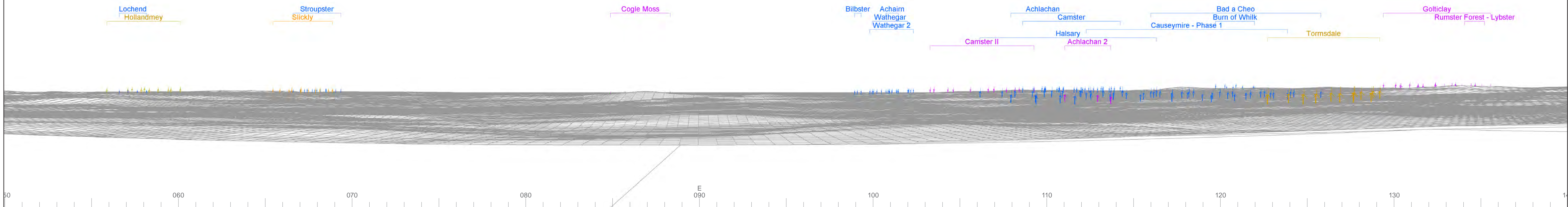




Baseline photograph

This image provides landscape and visual context only

Wireline drawing



OS reference: 306296E 955049N
 AOD: 243 m
 Direction of view: 95°
 Nearest turbine: 12.61 km

Horizontal field of view: 90° (cylindrical projection)
 Principal distance: 522 mm
 Paper size: 841 x 297 mm (half A1)
 Correct printed image size: 820 x 260 mm

Camera: Nikon D750
 Lens: 50mm Fixed Focal Length
 Camera height: 1.5 m

Photography Date: 24/05/2022
 Photography Time: 15:50

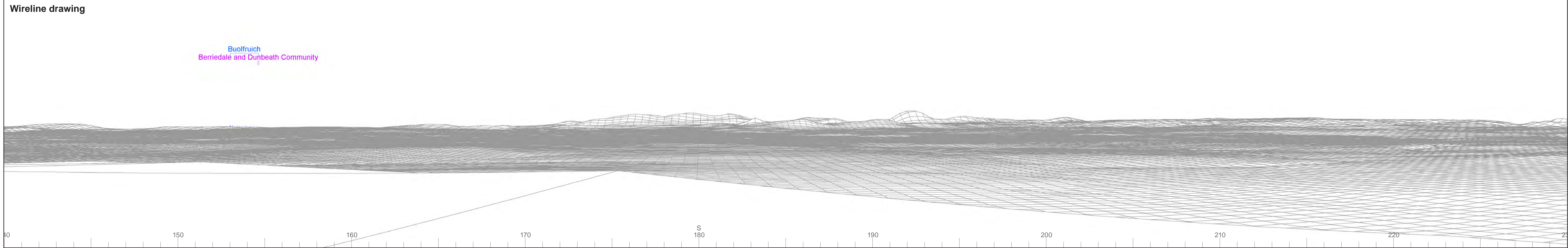
Wind Farm Developments key
 (by status):

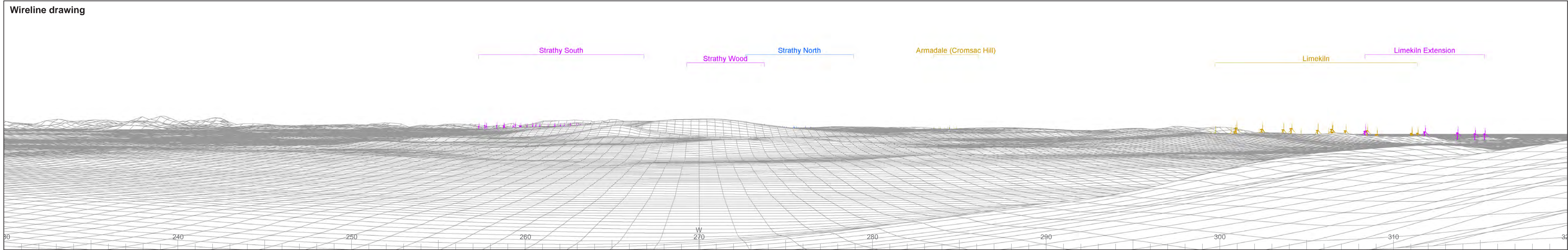
Proposed scheme
 Operational
 Consented

Application
 Appeal/PLI

Cairmore Hill
Figure: 5.2.11b
 Viewpoint 11: Ben Dorrery

© Crown copyright and database rights 2022 Ordnance Survey data. Licence number: 0100051673





© Crown copyright and database rights 2022 Ordnance Survey data. Licence number: 0100051673

1 2 3 4 5



Wireline drawing

View flat at a comfortable arm's length

OS reference: 306296E 955049N
AOD: 243 m
Direction of view: 0°
Nearest turbine: 12.61 km
Horizontal field of view: 53.5° (planar projection)
Principal distance: 812.5 mm
Paper size: 841 x 297 mm (half A1)
Correct printed image size: 820 x 260 mm

Wind Farm Developments key
(by status):
Proposed scheme
Operational

Cairnmore Hill
Figure: 5.2.11e
Viewpoint 11: Ben Dorrery

© Crown copyright and database rights 2022 Ordnance Survey data. Licence number: 0100051673





Photomontage

View flat at a comfortable arm's length



OS reference: 306296E 955049N
AOD: 243 m
Direction of view: 0°
Nearest turbine: 12.61 km

Horizontal field of view: 53.5° (planar projection)
Principal distance: 812.5 mm
Paper size: 841 x 297 mm (half A1)
Correct printed image size: 820 x 260 mm

Camera: Nikon D750
Lens: 50mm Fixed Focal Length
Camera height: 1.5 m

Photography Date: 24/05/2022
Photography Time: 15:50

Cairnmore Hill
Figure: 5.2.11f
Viewpoint 11: Ben Dorrery